

中胡

賽馬會中樂360 十面埋伏 (初級)

劉文金、趙咏山 編曲
譚逸昇 改編

【列營】

威武地

Musical notation for the first staff of '列營'. It begins with a treble clef, a key signature of one sharp (F#), and a 2/4 time signature. The melody starts with a forte (*f*) dynamic. A slur covers the first six notes, with a fermata above the sixth note. The staff then changes to a 3/4 time signature, with a mezzo-forte (*mp*) dynamic and a crescendo leading to a fortissimo (*ff*) dynamic.

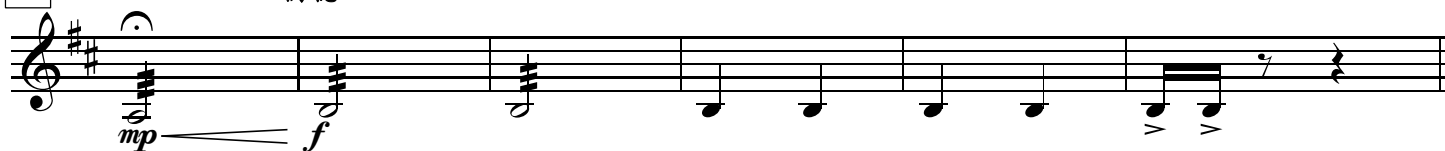
Musical notation for the second staff of '列營', starting at measure 4. It continues with a treble clef and a key signature of one sharp. The melody features a mezzo-forte (*mp*) dynamic with a crescendo.

Musical notation for the third staff of '列營', starting at measure 9. It features a treble clef and a key signature of one sharp. The melody includes a ritardando (*rit.*) marking and a tempo change to '慢' (Adagio). It contains three triplet markings (*3*) and a forte (*f*) dynamic.

Musical notation for the fourth staff of '列營', starting at measure 14. It features a treble clef and a key signature of one sharp. The tempo is marked '由慢漸快 行板' (Ritardando then Adagio). It includes two double bar line markings (*2*) and a tempo change to 3/4 time, followed by a change to 2/4 time. The section is labeled '(柳琴)'.

22

稍穩

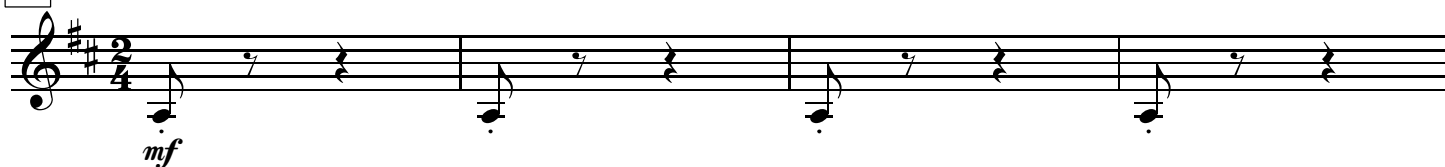


28

由慢漸快 行板



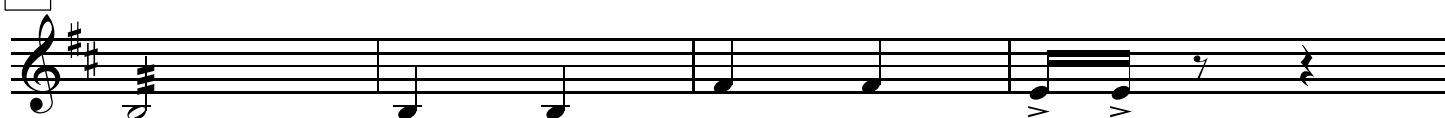
32



36



40



44

由慢漸快



45



102



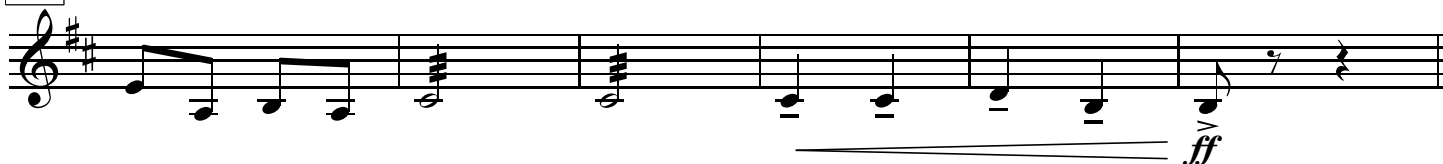
107



112



117



【小戰】
突轉快板

123 稍慢



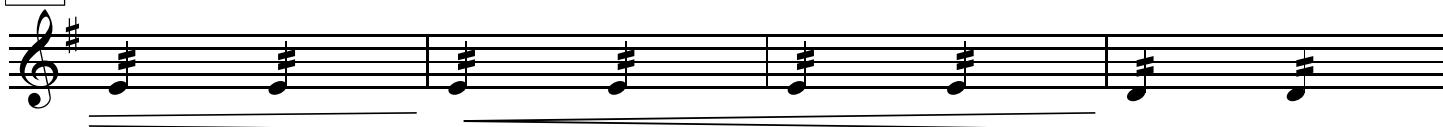
130



134



140



144

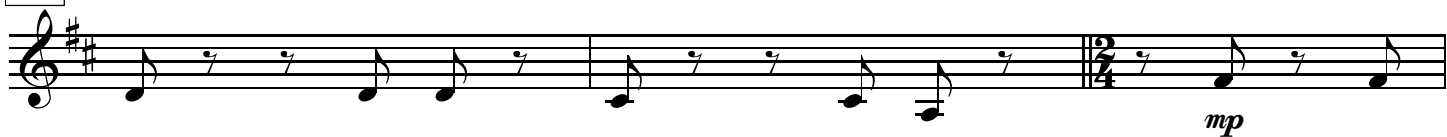


149

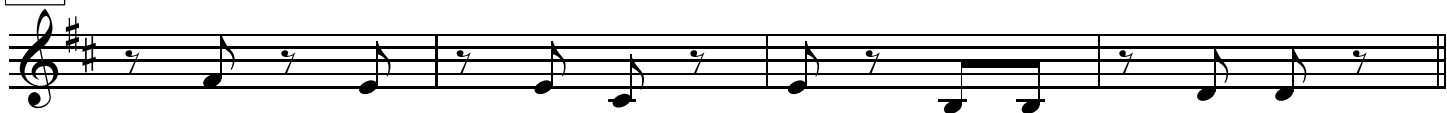
【奏凱】



153



156



160



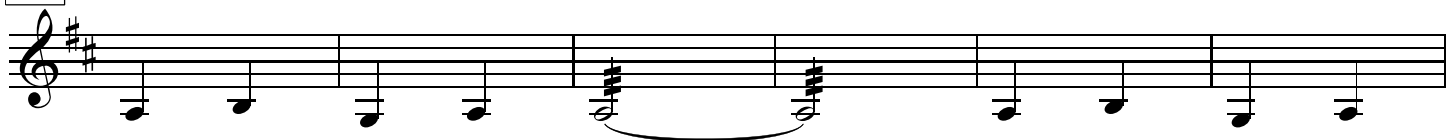
166



172

molto rit.

慢



178

