

月兒高

中音笙

古 曲
 彭修文 改編

(一) 海島冰輪

Largo ♩ = 28 深遠

8 *p* *f* *pp* *sfp*

5 *cresc.* *f* 快起漸慢

9 *accel.* 慢起漸快 *rit.* 2

(二) 江樓望月

14 Adagio con grazioso

8 *p*

18 *mp* *fp*

22 *mp* *p* *dim.*

(三) 海嶠躊躇

26 Adagio 感情洋溢、略有激動

8 *mf*

月兒高 - 中音笙

2

29 *p cresc.*

33

37 *f* **Lento** *ff*

54 *dim.* *mp cresc.* *p*

57 *mf dolce* *poco rit.* **2**

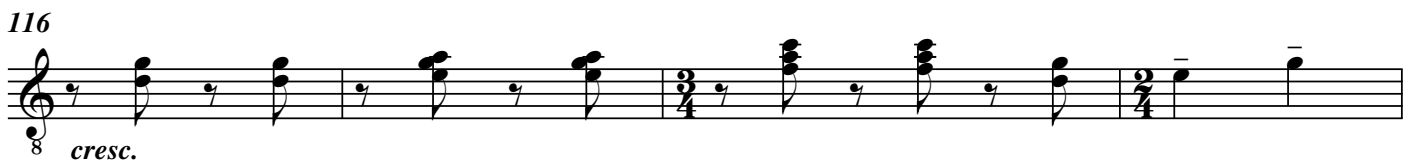
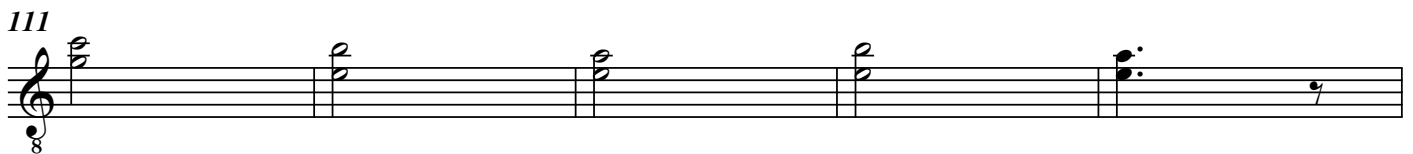
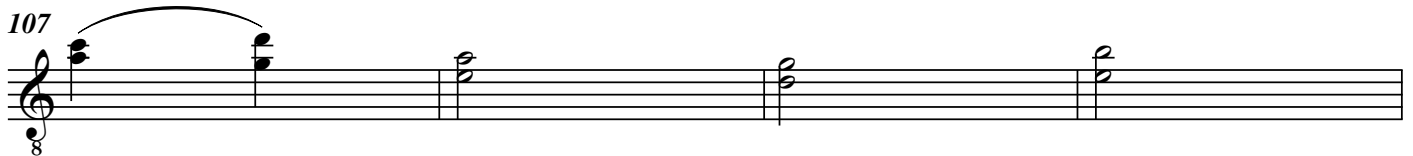
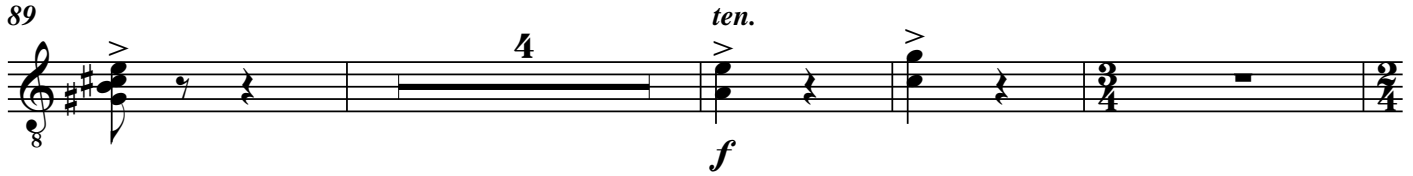
(四) 銀蟾吐彩

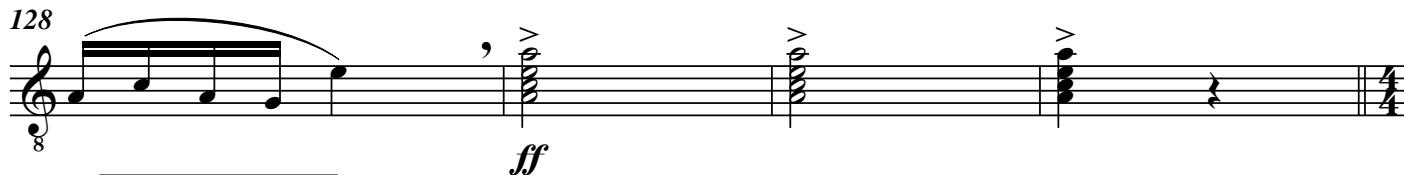
62 **Agitato tempo rubato 情緒激動** *accel.*

66 *a tempo* *mp sub.*

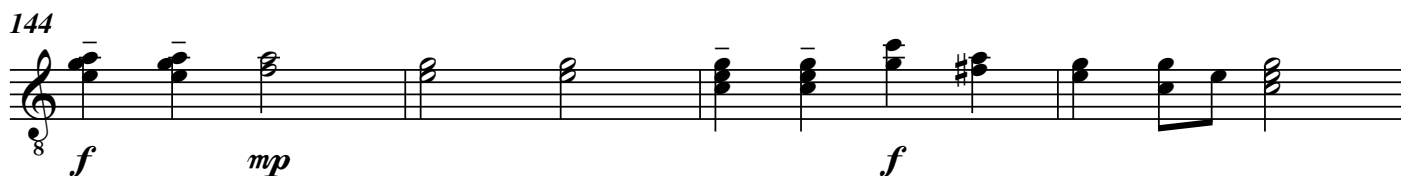
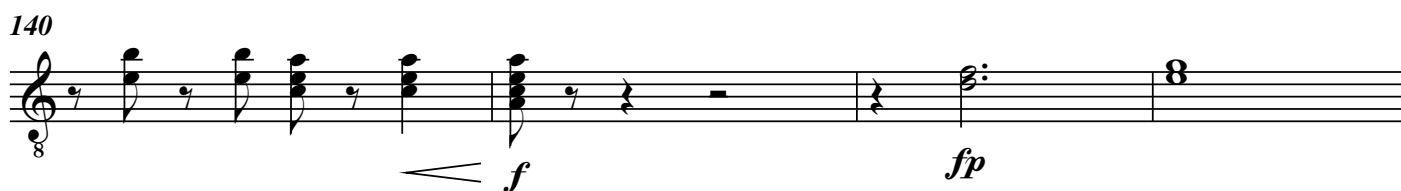
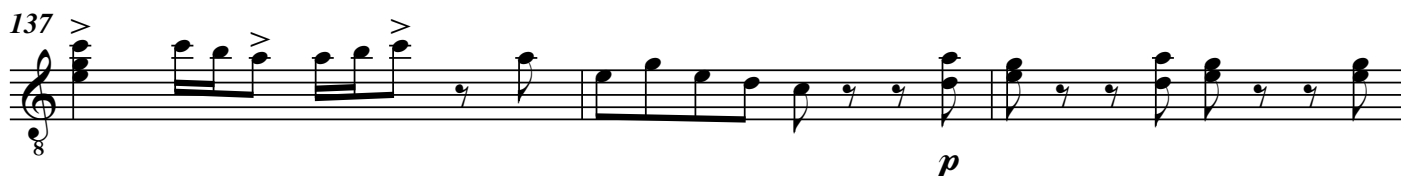
(五) 秋露滿天

84 慢起漸快





(六) 素娥旖旎



(七) 皓魄當空

157 *Andante grazioso* 清麗

163

167 *poco rit.*

(八) 銀河橫渡

170 172

cresc. *f*

175

179

poco a poco rit.

183

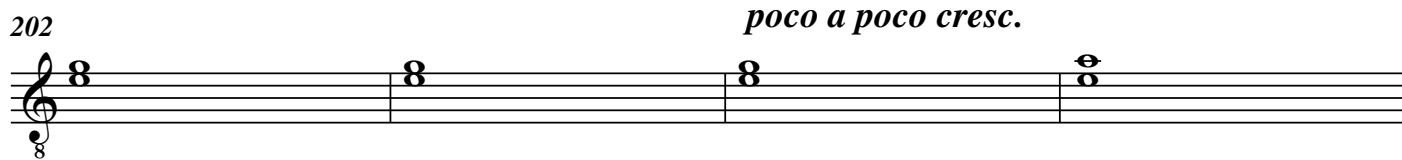
(九) 玉宇千層

188 *Grave* 11

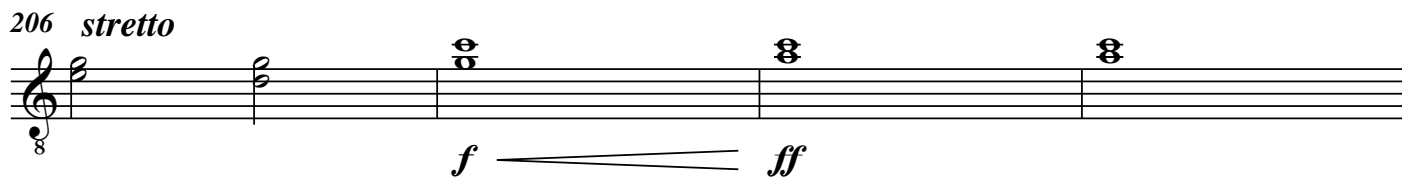
piu mosso 199

mf

202 *poco a poco cresc.*

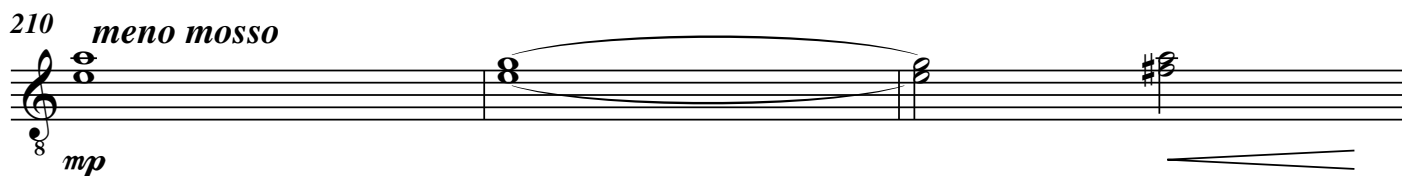


206 *stretto*



f \longrightarrow *ff*

210 *meno mosso*

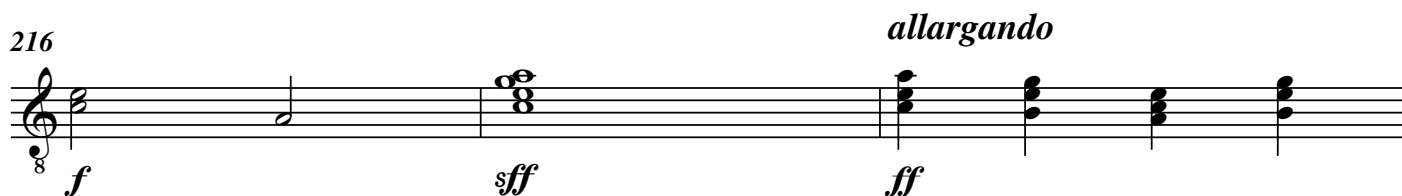


mp

213 *rit.*



216 *allargando*



f *ff* *ff*

219 *lunga morendo*



fff *ppp*