

春江花月夜

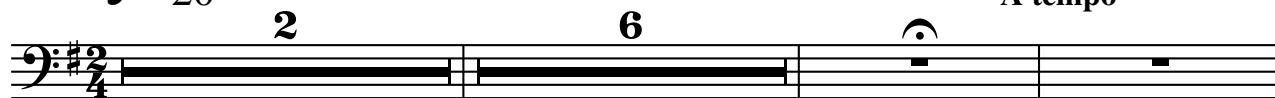
大阮

琵琶古曲
秦鵬章、羅忠鎔 編配

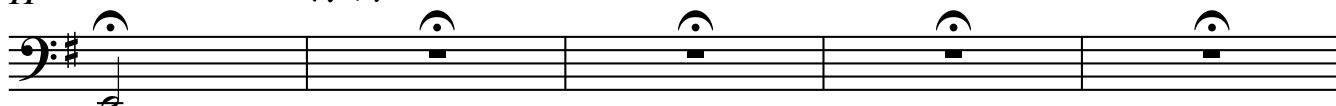
【一】江樓鐘鼓

♩ = 20

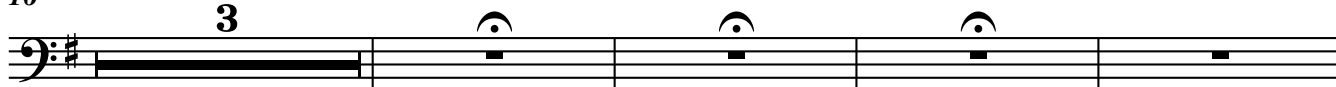
A tempo



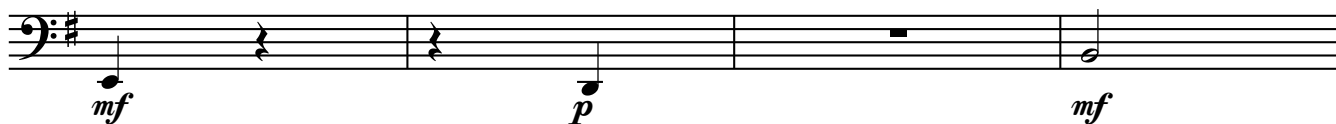
11 自由



16 3



23 ♩ = 40



27 2



32 3

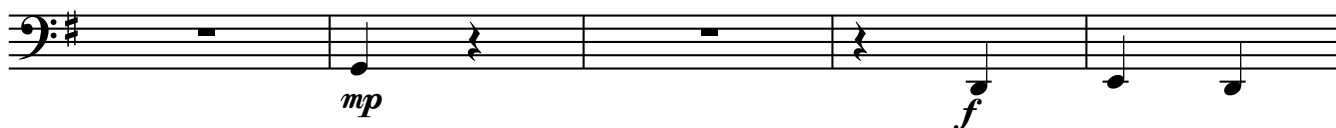


【二】月上東山

38 4



46 mp



51 mp



春江花月夜 -- 大阮

2

56 【三】花影層疊

56 **2**

61 **4** rit. A tempo

69

73 稍慢

77 【四】水雲深際 稍慢 ♩ = 36 88 ,
10 **2**

92 **6**

101 accel.

105 ♩ = 48

109 稍慢

【五】漁歌晚唱

114 稍慢、自由 $\text{♩} = 40 - 48$ 逐漸稍快 12 11

139 突快 $\text{♩} = 78$ accel. *f* *p*

143

147 $\text{♩} = 84$ *ff* *mf*

151 rit. $\text{♩} = 40$ *mp*

【六】洄瀾拍岸

155 慢起 $\text{♩} = 32 - 96$ Presto $\text{♩} = 144$ 5 *fff*

164

169 2 *pp*

174 rit. $\text{♩} = 40$ *ff* *mp*

春江花月夜 -- 大阮

4

【七】欸乃歸舟

179 悠慢 ♩ = 32

7 poco accel. 3 ♩ = 48

191

poco a poco

197

203 ♩ = 96 - 144

f

207

211

fff

216 轉慢 ♩ = 40

mf

(延長至等 rit. 止)

222

【八】尾聲

228 自由

♩ = 56 2 4 molto rit..